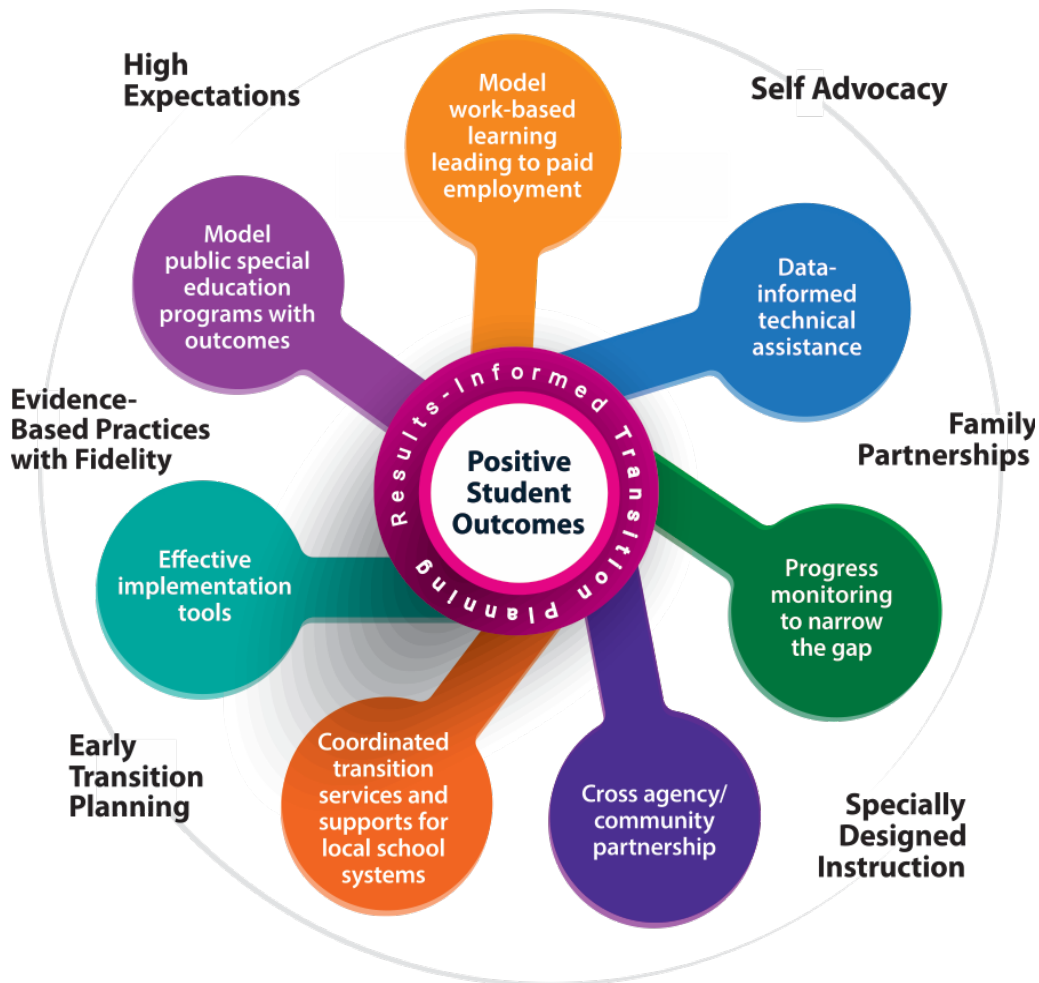


Secondary Transition Planning Guide for Individuals with Disabilities

Maryland State Department of Education
Division of Early Intervention/Special Education Services



The transition process is anchored in evidence-based practices that serve as predictors to post-school success.



Maryland's Secondary Transition Planning Guide for Individuals with Disabilities

© 2019 Maryland State Department of Education

Produced under the guidance of Marcella E. Franczkowski, Assistant State Superintendent, Division of Early Intervention and Special Education Services. Please include reference to the Maryland State Department of Education, Division of Early Intervention and Special Education Services on any replication of this information. To request permission for any use that is not "fair use" as that term is understood in copyright law, contact: Maryland State Department of Education, Division of Early Intervention and Special Education Services, 200 West Baltimore Street, Baltimore, Maryland 21201, 410-767-0249 voice.

The Maryland State Department of Education does not discriminate on the basis of race, color, sex, age, national origin, religion, disability, or sexual orientation in matters affecting employment or in providing access to programs and activities and provides equal access to the Boy Scouts and other designated youth groups. For inquiries related to Department policy, please contact the Agency Equity Officer, Equity Assurance and Compliance Office, Office of the Deputy State Superintendent for Finance and Administration, Maryland State Department of Education, 200 West Baltimore Street, Baltimore, Maryland 21201-2595, 410-767-0433 voice, 410-767-0431 fax, 410-333-6442 TTY/TDD.

Karen B. Salmon, Ph.D.
State Superintendent of Schools

Brigadier General Warner I. Sumpter, USA, Ret.
President, Maryland State Board of Education

Larry Hogan
Governor

Carol A. Williamson, Ed.D.
Deputy State Superintendent for Teaching and Learning

Marcella E. Franczkowski, M.S.
Assistant State Superintendent
Division of Early Intervention and Special Education Services

200 West Baltimore Street
Baltimore, Maryland 21201
MarylandPublicSchools.org



How to Use This Guide

The Maryland State Department of Education ***Secondary Transition Planning Guide for Individuals with Disabilities*** provides information to students, parents/guardians, educators, and community agencies about the transition process. Although every student will have individualized transition goals and outcomes, this guide provides “preliminary” information about the requirements of the transition process under the Individuals with Disabilities Education Act (IDEA) as well as recommended strategies and resources to acquire a positive outcome.

This guide will provide details about the following topics:

- Transition Planning (leading to employment and postsecondary education outcomes, according to IDEA)
- Roles and Involvement of Partners
- Requirements for the Maryland High School Diploma and the Maryland High School Certificate of Program Completion
- Maryland Summary of Performance (formerly Maryland Exit Document)
- Entitlement vs. Eligibility
- Age of Majority
- Maryland Adult Service Agencies
 1. Division of Rehabilitation Services (DORS)
 2. Developmental Disabilities Administration (DDA)
 3. Behavioral Health Administration (BHA)
 4. Department of Labor, Licensing and Regulation – Division of Workforce Development and Adult Learning (DLLR)
- Benefits
- Postsecondary Education/Disability Support Services
- Transportation/Travel Training
- Healthcare
- Community Access
 1. Recreation/Leisure
 2. Guardianship
 3. Social Security
 4. Financial Planning/Special Needs Trusts/Estate Planning
- Transition Process: Agency Linkage

Appendix A: Recommended Timeline(s)

Appendix B: Postsecondary Education/Disability Support Services FAQs

Appendix C: Specific Populations/Resources

Appendix D: Frequently Used Acronyms and Glossary

What is Transition Planning?

The Maryland State Department of Education, Division of Early Intervention/Special Education Services ***Secondary Transition Planning Guide for Individuals with Disabilities*** focuses on the movement of individuals with disabilities from school to postsecondary outcomes. A major component of secondary transition planning is that the sequential transition activities and services are person-centered and drive the Individual Education Program (IEP). For students to successfully exit high school prepared for college, career, and community, early planning is crucial. In Maryland, transition planning and the delivery of transition services begins during the IEP year in which the student turns 14 years of age.

The Individuals with Disabilities Education Act (IDEA) states that the purpose of the legislation is “to ensure that all children with disabilities have available to them a free appropriate public education that emphasizes special education and related services designed to meet their unique needs and prepare them for further employment and independent living.” The law stresses the need for educators, parents, and community agencies to work together to support the student as he or she works toward postsecondary goals and outcomes. Transition services must be provided to assist the student in the attainment of skills necessary to reach his or her postsecondary goals.

IDEA 2004 defines transition services as a coordinated set of activities for a student with a disability that are:

- designed to be within a results-oriented process, focused on improving the academic and functional achievement of an individual with a disability to facilitate their movement from school to post-school activities, including postsecondary education; vocational education; integrated employment; continuing and adult education; adult services; independent living or community participation;
- based on the individual's needs, taking into account their strengths, preferences, and interests; and;
- designed to include instruction, related services, community experiences, the development of employment and other post-school adult living objectives and when appropriate, acquisition of daily living skills and functional vocational evaluation.

Transition Planning

The goal of transition planning is to support students with disabilities as they progress through school and prepare for life in the adult world. This includes planning for college, work, transportation, living arrangements, health care, and daily living. The adult activities could be a combination of any of the following:

- Self-Determination and Advocacy
- Community participation
- Postsecondary education
- Employment training
- Competitive employment
- Independent living
- Adult service linkages

Transition planning for a student's future begins as early as elementary school with career awareness and exploration activities. Formal transition planning begins through the IEP process the year the student turns 14 and drives the development of the IEP. Students, with support from parents and educators, identify postsecondary goals in the areas of employment, postsecondary education or employment training; and if appropriate, independent living. These postsecondary goals are based upon the results of age appropriate transition assessments.

Why is a transition plan needed?

The transition plan is designed to ensure that the student will be provided with the necessary skills and services to make a smooth transition from school to adult life. For students with an IEP, public school systems and nonpublic schools provide educational supports that could include assistive technology, job training, personal assistance, and other supports deemed appropriate by the IEP team. When students exit high school, these supports are **not** automatically provided, even if they were available through the school years. (See Section on Eligibility and Entitlement)

What does transition planning include?

The transition planning process occurs when students with IEPs identify what they will do after graduation and consider the skills, training, education, and/or resources needed to reach these goals. It also includes:

- Identifying and applying to the appropriate adult service agencies.
- Gathering documents needed for future colleges, employers, or service providers.
- Determining the training transition activities and supports needed to reasonably
- enable the student to reach these goals.

When does planning for transition begin?

Transition planning begins the year the student turns 14, if not earlier. At this time a formal Transition Plan that includes the student's postsecondary goals and transition services must be developed and included in the IEP. This may sound very early, but careful planning is needed if students are to acquire the skills and experiences necessary to help them achieve their postsecondary goals. Starting transition planning at age 14 gives the student time to explore their postsecondary goal choices and modify or change them based on transition experiences and acquired knowledge. It will also provide time to apply for postsecondary services and supports such as: academic supports in college, job coaching, personal care assistance, subsidized housing, or other adult services.



Roles and Involvement of Partners

Just as important as the identification of the postsecondary goals are the various stakeholders that could support the transition process and assist the student in achieving the identified goals. Stakeholders come to the transition planning table with a variety of roles and responsibilities. These may vary across local school systems.

Partner	Roles/Responsibilities
Student	<ul style="list-style-type: none"> ○ Participate in transition planning ○ Identify strengths and challenges ○ Express interest and preferences ○ Identify postsecondary goals ○ Participate in transition activities identified in the IEP
Parent/Guardian	<ul style="list-style-type: none"> ○ Participate in IEP and transition team planning meetings ○ Share student’s strengths, interests, and support needs with IEP team ○ Help student access other transition partners ○ Advocate for student’s goals ○ Share contacts and networks for potential job opportunities ○ Provide feedback to transition partners ○ Review transition timeline and ask for supports as needed
School System	<ul style="list-style-type: none"> ○ Secure parent/guardian permission to communicate with state and community agencies ○ Invite partners to IEP team meetings when transition is discussed ○ Assist parent/guardians in applying for postsecondary services from state agencies such as Division of Rehabilitation Services (DORS), Developmental Disabilities Administration (DDA), and Behavioral Health Administration (BHA) ○ Provide instruction and work experiences in authentic work environments if indicated in student’s IEP ○ Work collaboratively with DORS to ensure eligible students and potentially eligible students are identified and receive Pre-Employment Transition Services (Pre-ETS) ○ Provide informational meetings for parents regarding aspects of transition planning and the application process/timeline for state agencies that may provide services to the student upon exit from the school system ○ Document and report student progress and status after exit
Maryland Division of Rehabilitation Services (DORS)	<ul style="list-style-type: none"> ○ Participate in transition planning meetings/attend IEP meetings when possible ○ Begin working with eligible students prior to their last year of high school to develop an Individualized Plan for Employment (IPE) ○ Identify services necessary for successful transition to postsecondary education and/or employment ○ Contract with Community Rehabilitation Providers (CRPs) to support students with job development and employment services ○ Provide Pre-Employment Training Services (Pre-ETS) to eligible high school students age 14-22 in the areas of Job Exploration Counseling, Work-Based



Partner	Roles/Responsibilities
	Learning Experiences, Instruction in Self-Advocacy, Counseling for Opportunity in Postsecondary Education, and Workplace Readiness Training
Maryland Developmental Disabilities Administration (DDA)	<ul style="list-style-type: none"> ○ Participate in transition planning ○ Collaborate with other transition partners to ensure that students have appropriate documentation to qualify and access services ○ Provide long-term funding for eligible individuals upon school exit ○ Contract with a Coordinator of Community Services (CCS) to assist with the transition from school to the adult world
Adult Service Providers, Community Rehabilitation Providers (CRPs)	<ul style="list-style-type: none"> ○ Participate in transition planning ○ Enter into contractual agreements with school systems and DORS to facilitate work-based experiences and provide job development and job coaching before and after school exit ○ Provide services and supports for DORS and DDA clients to provide job development and job coaching upon exiting high school
Colleges, Postsecondary Education Training Programs	<ul style="list-style-type: none"> ○ Engage with student to identify accommodations and support needs in collaboration with Disability Support Services on the college campus ○ Provide access and support for participation in campus activities, courses, and employment

Requirements for the Maryland High School Diploma and the Maryland High School Certificate of Program Completion

Maryland High School Diploma ***(See COMAR 13A.03.02.09)***

- A Maryland High School Diploma shall be awarded to a student who:
 - a. Completes the enrollment, credit, and services requirements.
 - b. Local school systems may establish additional credit requirements or add endorsements to the diploma as incentive for students to meet locally established requirements beyond the minimums specified by the State.
- For more information visit:
<http://www.marylandpublicschools.org/programs/Documents/Testing/GraduationsRequirements2018.pdf>

Maryland High School Certificate of Program Completion ***(See COMAR 13A.03.02.09E)***

- The Maryland High School Certificate of Program Completion shall be awarded only to students with disabilities who cannot meet the requirements for a diploma but who meet the following standards:
 - a. The student is enrolled in an education program for at least 4 years beyond grade 8 or its age equivalent, and is determined by an IEP team, with the agreement of the parents of the student with disabilities, to have developed appropriate skills for the individual to enter the world of work, act responsibly as a citizen, and enjoy a fulfilling life, including but not limited to:
 - Gainful employment;
 - Post-secondary education and training;
 - Supported employment; and
 - Other services that are integrated in the community; or
 - b. The student has been enrolled in an education program for 4 years beyond grade 8 or its age equivalent and will have reached age 21 before the first day of the next school year.
- The Maryland Summary of Performance that describes the student's skills shall accompany the Maryland High School Certificate of Program Completion.
- The final decision to award a student with disabilities a Maryland High School Certificate of Program Completion will not be made until after the beginning of the student's last year in high school.
- A student with significant cognitive disability may not meet high school graduation requirements if a student:
 - a. Participates in an Alternative Assessment based on Alternative Academic Achievement Standards (AA-AAAS); and
 - b. Continues to receive instruction based on Alternative Academic Achievement Standards through high school.

- If a student participates in a graduation ceremony prior to the completion of the student's education program, at the ceremony the school system shall issue to the student a Certificate of Achievement or other similarly titled certificate in place of a diploma. (COMAR 13A.03.02.09E(3))

Maryland Summary of Performance (MSOP)

Maryland provides students with IEPs a Maryland Summary of Performance (MSOP) before they transition from school to post school activities. The MSOP is required under the reauthorization of the Individuals with Disabilities Education Act of 2004. In Maryland, this document is given to all students with IEPs before they exit with a Maryland High School Diploma or Maryland High School Certificate of Program Completion (See COMAR 13A.03.02.09E (2)).

Why is the Maryland Summary of Performance (MSOP) important?

The Maryland Summary of Performance provides exiting students with IEPs important information that they may use as they transition from school to postsecondary activities. These activities may include employment, postsecondary education, supported employment, or independent living provided by community rehabilitation providers. The MSOP will be generated as part of the student's IEP, and the information that is gathered is based on input from the student, the family, and the IEP team.

The MSOP may provide potential employers, postsecondary education institutions, and adult service provider's meaningful information about the young adult's skills, strengths, and any supports that he/she may need to be successful. There are four parts to the Maryland Summary of Performance. Each part is listed below.

Part 1- Background Information

Part 2- Student's Postsecondary Goals

Part 3- Summary of Performance (Academic, Cognitive, and Functional Levels)

Part 4- Recommendations in Meeting Postsecondary Goals

Entitlement vs. Eligibility

Understanding the difference between the entitlement of public education and the eligibility of adult services can be very confusing. In Maryland, a young adult with a disability who is receiving special education services is ENTITLED to a free, appropriate, public education through the school year in which they turn 21 years of age or has met the requirements for a Maryland High School Diploma or Maryland High School Certificate of Program Completion. These services are documented within the student’s Individualized Education Program (IEP) as determined by the IEP team and is funded by the local school system. A student who exits the school system with a Maryland High School Diploma or Maryland High School Certificate of Program Completion is no longer entitled to services. At this point individuals must apply for adult services to see if they are ELIGIBLE to receive them. In addition to meeting eligibility criteria, funding must be available to receive services and supports from adult service agencies (e.g. DORS, DDA, and BHA). See chart below.

Entitlement While enrolled in school	Eligibility (ADA & Section 504) After exit from school or age 21
Individuals with Disabilities Education Act (IDEA) is an “entitlement” law intended to guarantee students with disabilities a free, appropriate primary and secondary education.	The Americans with Disabilities Act (ADA) is about access. The goal of Section 504 and the ADA is to remove barriers and to guarantee reasonable accommodations. Persons with disabilities become the sole point of contact, not the parent or family.
<ul style="list-style-type: none"> • Free, appropriate public education (FAPE) • Least Restrictive Environment (LRE) • Specially Designed Instruction (SDI) • Related Services • Preparation for further education, employment, and independent living • Entitled to services that will help students meet success in school • Services are accessed through the school system 	<ul style="list-style-type: none"> • Eligibility for postsecondary services is not guaranteed • Individuals must qualify for services • Services depend on funding and availability • Postsecondary services only ensure individuals are provided equal access • Responsibility to obtain services is on the individual/parent/guardian • Services may be provided IF there is enough staff, capacity at the facility, and/or funds to provide services • Self-advocacy is necessary to obtain accommodations

Age of Majority

The Age of Majority is the legally defined age at which a person is considered an adult, with all the rights and responsibilities of adulthood. When the term *age of majority* is used, it generally refers to when a young person reaches the age where one is considered to be an adult. In Maryland, that age is 18. At least one year prior to reaching age 18, an individual must be informed of their rights under IDEA. In Maryland, educational decision making does not automatically transfer to a student with a disability at the age of majority except under limited circumstances. (See Education Article §8-412.1, Annotated Code of Maryland)

Maryland State Adult Service Agencies

The following section describes four state agencies that may provide services or supports for eligible individuals. Individuals must meet specific eligibility criteria for each agency. A brief summary of the four State agencies and their eligibility criteria is provided.

Maryland State Adult Services Agencies: DORS

AGENCY NAME & DESCRIPTION	AGENCY INFORMATION
<p>Division of Rehabilitation Services (DORS)</p> <p>What does this agency do? The Maryland Division of Rehabilitation Services (DORS) is all about employment. If you want to work, DORS wants to help you! DORS helps high school students, college students, and students in other approved programs prepare for work. DORS also helps people with disabilities find employment. If you want to work and have a disability that makes it difficult for you to find or keep a job, DORS may be able to help you.</p> <p>DORS offers two specific programs to help youth with documented disabilities prepare for employment:</p> <ul style="list-style-type: none"> • Pre-Employment Transition Services for students at least 14 years old, in at least high school, and no more than 21 years old. For more information visit: http://dors.maryland.gov/Brochures/Pre-ETS_Fact_Sheet.pdf. • Vocational Rehabilitation Service for high school students in the next-to-last year of high and out-of-school youth may be eligible for additional Vocational Rehabilitation services beyond Pre-Employment Transition Services. One must apply and be found eligible for Vocational Rehabilitation services. There may be a waiting list for these services. <p>DORS has transition counselors assigned to every public high school in Maryland and works specifically with students who have significant disabilities to prepare them for employment. DORS transition counselors work with eligible students during their last two years of school to both provide and arrange for services (such as career counseling and decision making, assistive technology, job preparation, post-secondary education assistance, job placement services, and job coaching services) to assist with transition planning to help ensure a smooth transition from school to post-secondary education or employment.</p> <p>When to apply: Be sure to connect with DORS student services as early as your first year of high school and apply for additional services in your last two years of high school. Qualifying students can request Pre-Employment Transition Services as early as 14 years old when in at least high school. It is recommended that students apply for Vocational Rehabilitation services through DORS in the fall of their next-to-last year of high school. If eligible, Vocational Rehabilitation services may be available to the individual after they are no longer considered a student. Working with students during their last two years of high school gives DORS transition counselors ample time to provide transition planning and help ensure a smooth transition from school to post-secondary education or employment.</p>	<p>http://www.dors.maryland.gov/</p> <p>Who may receive services? In order to be eligible for DORS services, you must have a physical or mental disability that seriously affects your ability to work, and you must need employment rehabilitation services in order to get or keep a job. If you receive Supplemental Security Income (SSI) and/or Social Security Disability Insurance (SSDI), you are presumed eligible for DORS services. For additional information regarding DORS eligibility and order of selection please visit: https://dors.maryland.gov/consumers/Pages/eligibility.aspx</p> <p>How to begin services: You or anyone listed below may call your local DORS office or complete an online referral form on the agency website:</p> <ul style="list-style-type: none"> • School personnel with parental, guardian consent. • Parents or other family members. • Service providers. <p>http://www.dors.maryland.gov/consumers/Pages/referral.aspx</p>

Maryland State Adult Services Agencies: DDA

AGENCY NAME & DESCRIPTION	AGENCY INFORMATION
<p>Developmental Disabilities Administration (DDA)</p>	<p>https://dda.health.maryland.gov/Pages/dda.aspx</p>
<p>What does this agency do? The Developmental Disabilities Administration (DDA) provides a coordinated service delivery system, so that people with developmental disabilities receive appropriate services oriented toward the goal of full integration into their community, including obtaining and maintaining integrated competitive employment. The DDA’s community-based service delivery system includes various home and community-based services and supports provided to eligible people, through either a Medicaid State Plan, Waiver program or via DDA State funded services.</p> <p>When to apply: You can apply for DDA services at any time and at any age. You must be found DDA eligible to receive any DDA services. If you are specifically applying for TY services, contact the servicing DDA regional office when you are age 14. You may ask for assistance to update or complete the application for determining your eligibility. All DDA waiver applications must be completed by June 30 of the eligibility year to be considered for funding. If the date of transition is after the 21st birthday, the person will be eligible for one year after the date of exiting or graduating from high school. Applications submitted later will be placed on a waiting list. Applications are also available online at www.dda.health.maryland.gov/Documents/dda_ea_application_updated.pdf.</p>	<p>Who may receive services? DDA-funded services are not an entitlement. Funding for Transitioning Youth (TY) services comes, in part, from one of DDA’s three federal waiver programs: Community Pathways, Family Supports, or Community Supports. Waivers allow the DDA to provide specific services through funding from the federal Centers for Medicare and Medicaid Services (CMS). Additionally, the Governor’s Transitioning Youth Initiative (GTI) earmarks funds in the DDA budget for eligible students leaving school. The GTI is a collaboration through a partnership between the DDA and Maryland’s Division of Rehabilitation Services (DORS).</p> <p>To be eligible for the TY Initiative, a person must be found fully eligible as developmentally disabled, based on the following criteria:</p> <ul style="list-style-type: none"> ● Maryland resident ● Waiver eligible ● 21 years old ● Have a severe chronic disability that: <ul style="list-style-type: none"> ○ Is attributable to a physical or mental impairment other than a sole diagnosis of mental illness. ○ Results in the need to have services which are individually planned and coordinated. ○ Results in a need for services that are likely to continue indefinitely. ○ Results occurred before the age of 22. ○ Results in the inability to live independently <p>Note: A sole diagnosis of a developmental disability does not mean a person is automatically eligible</p> <p>For more information, contact your regional office:</p> <ul style="list-style-type: none"> ● Central Maryland (Serving Anne Arundel, Baltimore, Baltimore City, Harford, and Howard) 1401 Severn Street, Baltimore, MD 21230, 410-234-8200 ● Southern Maryland (Serving Calvert, Charles, Montgomery, Prince George’s, and St. Mary’s) 312 Marshall Avenue, Laurel, MD 20707, 301-362-5100 ● Western Maryland: (Serving Allegany, Carroll, Frederick, Garrett, and Washington) 1360 Marshall Street, Hagerstown, MD 21740, 301-362-5100 ● Eastern Shore: (Serving Caroline, Cecil, Dorchester, Kent, Queen Anne’s, Somerset, Talbot, Wicomico, and Worcester) 926 Snowhill Road, Building 100, Salisbury, MD 21802 , 410-334-6920

Maryland State Adult Services Agencies: BHA

AGENCY NAME & DESCRIPTION	AGENCY INFORMATION
<p>Behavioral Health Administration (BHA)</p>	<p>https://bha.health.maryland.gov/pages/index.aspx</p>
<p>What does this agency do? The BHA is part of the Maryland Department of Health (MDH) that serves people with mental illness and/or problems with alcohol and drug use. Through its local agencies, called Local Behavioral Administrations (LBHA) or Core Service Agencies (CSA), BHA funds and administers programs including but not limited to: psychiatric inpatient care, residential treatment, routine and intensive outpatient care, crisis services, rehabilitation services, family support, supported housing and supported employment for people with mental illness. Some programs specifically for transition-aged youth are available in some regions.</p> <p>When to apply: BHA provides some services for children (birth to 16) and youth and adult services begin at age 16. For further information, refer to: https://mmcp.health.maryland.gov/Pages/home.aspx.</p>	<p>Who may receive services? People with mental health care needs who are Medicaid-eligible. In some cases, people with significant mental health needs who are not Medicaid-eligible for financial reasons may still qualify for assistance.</p> <p>How to apply: Note that if you are already enrolled in Medicaid, you do not need to enroll separately for mental health services. For more information, contact the BHA Office of Consumer Affairs at 410-402-8447 or your Local Behavioral Administrations (LBHA) or Core Service Agency (CSA). You can find a listing of the agencies at the Maryland Association of Behavioral Health Authorities. www.marylandbehavioralhealth.org</p>

Maryland State Adult Services Agencies: Maryland Labor

AGENCY NAME & DESCRIPTION	AGENCY INFORMATION
<p>Office of Workforce Development and Adult Learning, Maryland Department of Labor</p>	<p>http://labor.maryland.gov</p>
<p>What does this agency do? Maryland Department of Labor's Office of Workforce Development Youth Service Division provides programs and services to help young adults reach educational and employment goals. Through the Maryland Labor local America's Job Centers and Workforce Investment Boards, Maryland Labor provides career consultation, training, computer access, and other support services. Through funding from the Workforce Innovation and Opportunity Act (WIOA), Maryland Labor in conjunction with the American Job Centers provides an array of employment services and connects customers to work-related training and education opportunities. WIOA affirms the Department's commitment to providing high quality services for youth and young adults beginning with career exploration and guidance, continued support for educational attainment, opportunities for skills training in occupations in-demand, enrollment in postsecondary education, and attainment of industry recognized credentials in a career pathway that will lead to employment.</p>	<p>Who may receive services? The Youth Services Division serves young adults, with or without disabilities, ages 14-24. The One Stop Career Centers are available to job-seekers of any age with or without disabilities. To learn more about career exploration, training, and jobs, visit:</p> <ul style="list-style-type: none"> • Maryland Department of Labor website at http://labor.maryland.gov/county/ or call the Maryland Department of Labor at 410-767-2173 to find a local American Job Center, or • Maryland Workforce Exchange website: https://mwejobs.maryland.gov/vosnet/Default.aspx.



Benefits

Medicaid and Medicaid Waivers

The Maryland Department of Health (MDH) administers Medicaid or Medical Assistance (MA). Both Medicaid and Medicaid Waiver programs can be important sources of health coverage, supplemental assistance, long term care, and at-home/community-based supports for people with disabilities.

Benefit	Benefit Information
<p>Medicaid</p>	<p>What does Medicaid do?</p> <ul style="list-style-type: none"> ● Provides healthcare coverage. ● Provides additional funding through Medicaid Waiver Programs for personal care services such as: personal hygiene and grooming, toileting, eating, dressing, mobility, at-home medical care, and access to medical appointments. <p>Who is eligible for Medicaid?</p> <ul style="list-style-type: none"> ● Generally, those individuals who are: <ul style="list-style-type: none"> ○ Disabled ○ Blind ○ caring for a child whose parent is unemployed, sick, or deceased, or ○ meet the program’s income requirements. ● Eligibility for Medicaid in Maryland is determined by local Departments of Social Services ● For more information visit: <ul style="list-style-type: none"> ○ https://mmcp.health.maryland.gov/Pages/Am%20I%20Eligible.aspx ○ https://www.medicare.gov/manage-your-health/i-have-a-disability
<p>Medicaid Waiver Programs</p>	<p>Maryland Medicaid’s home and community-based services are offered through the regular Medicaid program and special Medicaid programs called “waivers.” A waiver puts aside the eligibility requirements of the parents of a child with a disability and looks only at the income of the child. Each waiver has different eligibility criteria and each target a different population, such as older adults or people with a certain disability.</p> <ul style="list-style-type: none"> ● Services are not an entitlement. ● Must be a Maryland resident to apply and be determined eligible for DDA services. ● Two groups of individuals are eligible for services: <ul style="list-style-type: none"> ○ Those with developmental disabilities and; ○ Those who have a severe, chronic disability which is caused by a physical or mental condition, other than a sole diagnosis of mental illness. ● Visit https://mmcp.health.maryland.gov/Pages/Am%20I%20Eligible.aspx. ● To learn more about Medicaid Waiver programs (including Community First Choice, Community Options, and Medical Personal Assistance) call 410-767-1739, or visit http://medicaidwaiver.org/state/maryland.html. <p>For information about Home and Community Based Services, visit https://mmcp.health.maryland.gov/waiverprograms/Pages/Home.aspx.</p>

How to apply: To apply for Medicaid, Maryland residents visit their county or city Department of Social Services. There, they are interviewed and submit their application. Visit <https://medicaid-help.org/Primary-Information> for help to answer questions, check eligibility, and assist in applying for Medicaid.



Social Security Administration Benefits for People with Disabilities

The Social Security Disability Insurance and Supplemental Security Income disability programs are the largest of several Federal programs that provide assistance to people with disabilities. While these two programs are different in many ways, both are administered by the Social Security Administration (SSA) and only individuals who have a disability and meet medical criteria may qualify for benefits under either program. Visit <https://www.disabilitysecrets.com/> for additional information and assistance with applying for Social Security benefits or appealing a disability decision.

Supplemental Security Income (SSI)

Question	Answers about the Supplementary Security Income (SSI) Benefit
<p>What does Supplemental Security Income (SSI) do?</p>	<p>The Supplemental Security Income (SSI) program pays benefits to disabled adults and children who have limited income and resources. SSI is a Federal income supplement program funded by general tax revenues (<i>not</i> Social Security taxes):</p> <ul style="list-style-type: none"> ● Designed to help aged, blind, and disabled people, who have little or no income ● Provides cash to meet basic needs for food, clothing, and shelter ● Provides medical assistance (Medicaid) for beneficiaries to pay for hospital stays, doctor bills, prescription drugs, and other health costs. <p>SSI beneficiaries may also be eligible for food assistance.</p>
<p>Who is eligible for SSI Benefits?</p>	<ul style="list-style-type: none"> ● Disabled; Blind; or Aged (65 and older); and who have limited income and limited resources. ● Income and assets of families of children with disabilities are also considered when determining financial eligibility. ● At 18 years of age the SSA considers only the individual's income and assets, not the income and assets of the parents. ● If a child has previously been turned down for SSI based on income, reapply for benefits after his/her 18th birthday when the parent’s income will no longer be considered for eligibility purposes. ● Individuals receiving Supplemental Security Income (SSI) are automatically eligible to receive Medical Assistance.
<p>How to Apply?</p>	<ul style="list-style-type: none"> ● File an Application with your local Department of Social Services in the city or county where you live. ● Complete an online application at https://www.ssa.gov/forms/. Select Apply for Disability Benefits. ● Obtain an application at your local Department of Social Services and local Health Department. One can also be mailed to you by calling 1-800-456-8900.
<p>What if my application is denied?</p>	<ul style="list-style-type: none"> ● If your application has recently been denied, the Internet Appeal is a starting point to request a review of the decision about your eligibility for disability benefits. ● If your application is denied for: <ul style="list-style-type: none"> ○ Medical reasons, you can complete and submit the required Appeal Request and Appeal Disability Report online. ○ Non-medical reasons, you should contact your local Social Security Office to request the review. You also may call the toll-free number 1-800-772-1213, to request an appeal. People who are deaf or hard of hearing can call the toll-free TTY number, 1-800-325-0778.



Social Security Disability Insurance (SSDI)

Question	Answers about the Supplementary Disability Insurance (SSDI) Benefit
What does Social Security Disability Insurance (SSDI) do?	The Social Security Disability Insurance (SSDI) pays benefits to you or certain members of your family if you are "insured," meaning that you worked long enough and paid Social Security taxes.
Who is eligible for SSDI Benefits?	To qualify for SSDI, a person must be under 65 years old and have a qualifying severe disability as designated by the Social Security Administration. <ul style="list-style-type: none">● An unmarried child may be eligible to receive benefits on a parent's work record if:● The child is under 18, with or without a disability; or● The child is 18-19 years old and a full-time student (no higher than grade 12); or● The child 18 or older with a disability that began before age 22 and meets the definition of disability for adults.

Postsecondary Education/Disability Support Services

It is important for students to understand the difference between the Individuals with Disabilities Education Act (IDEA), Americans with Disabilities Act (ADA) and Section 504 of the Rehabilitation Act of 1973, and the provisions they provide for students. While in high school, the IDEA outlines how educational supports are provided through the IEP process. When a student enters college (postsecondary education), the ADA and Section 504 guarantee the right of individuals with disabilities to receive reasonable accommodations to be successful in postsecondary education. The chart below lists the differences between high school and college.

Service Area	For High School	For College
Legal	<ul style="list-style-type: none"> Individuals with Disabilities Education Act (IDEA) entitles students with disabilities a free and appropriate education. IDEA is about SUCCESS. 	<ul style="list-style-type: none"> Americans with Disabilities Act (ADA) and Section 504 guarantees reasonable accommodations. ADA is about ACCESS.
Required Documentation	<ul style="list-style-type: none"> Individualized Education Plan (IEP) Documentation focuses on determining whether a student is eligible for services based on specific categories in IDEA. 	<ul style="list-style-type: none"> High School IEP may not be sufficient. Students may need to get evaluation(s) at their own expense. Documentation must provide information on specific reasonable accommodations.
Advocacy	<ul style="list-style-type: none"> Parents are actively involved in advocating for appropriate services and supports for their children. Schools reach out to parents and their participation in the IEP team process is required. Parents talk directly to their child’s teachers on a regular basis. 	<ul style="list-style-type: none"> Students are expected to advocate for themselves. Parent involvement is not always actively sought and may be discouraged at times. College faculty and staff do not typically communicate with parents directly without student consent.
Individual Education Programs and Supports	<ul style="list-style-type: none"> The IEP team, which includes the student, parent(s) and school district, develops the Individual Education Program (IEP) and must follow this legal document for services Parent has access to student records and can participate in the accommodation process. 	<ul style="list-style-type: none"> There are no IEPs in college. The Disability Services Office will develop an accommodation plan based on documentation of disability that is provided by the student. Student must request accommodations from the college Disability Services Office each semester. Parent does not have access to student records without student’s written consent.

It is important that students know their rights and responsibilities, as IDEA does not apply to colleges, trade schools, or universities. The Postsecondary Education Accommodations chart in Appendix A of this guide outlines some common questions about accommodations and Disability Services at Postsecondary Education Institutions.

Transportation, Mobility, and Travel Instruction

It is important for students and their families to plan for how they will travel to postschool settings, such as college or work. While in school, students may have relied on school transportation, family members or friends to transport them. These same mobility supports may not be available to students when they leave school. It is important for students to learn about traveling independently and transportation while they are still in school so when they leave, they have the knowledge and skills to get where they need to go.

In transition planning, the team can work collaboratively with families and students to:

- Assess a student's mobility and functional capacity to independently travel;
- Assess a student's cognitive capacity to make decisions, problem solve, and understand social norms that may be necessary as they travel independently;
- Schedule visits to local transit agencies where students can learn about community transportation options;
- Invite transportation professionals to visit with students to talk about their services;
- Examine the types of transportation service that may be available in their community through student-focused activities;
- Learn about mobility options through local transportation planning organizations and transit agencies;
- Identify travel instruction and travel training programs to teach students how to use public transportation; and;
- Think about the most inclusive transportation options for students.

Transportation provides access to opportunities such as employment, education, health care, and recreation. Individuals with disabilities who do not drive or have a vehicle available to them will have to consider alternate mobility options. Transportation services vary across the State. For some students who are eligible, paratransit services, may be the most appropriate travel mode. In Maryland, the Maryland Transit Authority Mobility Link program provides door to door transportation service to students who go through an assessment process to determine their eligibility. MobilityLink, which is specifically designed for individuals with disabilities, is a requirement of the Americans with Disabilities Act (ADA) and requires advance notice and scheduling. However, for many students, inclusive community transportation options that enable students to travel spontaneously is the most appropriate service. Transition professionals, families, and youth themselves can work together with transportation professionals to determine the mobility service that is aligned with the student's needs and capacity.

Transportation Resources

- State departments of transportation and transit administrations are a valuable resource to identify local transportation providers.
 - Maryland Transit Administration (MTA)
 - Maryland offers free or reduced fare programs to individuals with disabilities or older adults to enable them to use community transportation. To learn about these programs, visit Maryland MTA reduced fare program: <https://mta.maryland.gov/disabled-reduced-fare-program>
- Some students may need significant supports to travel and may not be able to travel independently using a public bus or train (MTA fixed route system). Learn about the eligibility requirements for the MTA MobilityLink (Paratransit) Program MobilityLink: <https://mta.maryland.gov/mobility>.

- Taxi services may be appropriate for some students and may take youth to places that buses or trains don't go.
 - Maryland Taxi Services: <http://mdod.maryland.gov/transport/Pages/Taxi-Services.aspx>
- Federal resources can provide information about national or local programs.
 - US Department of Labor, Office of Disability Employment Policy Transportation Portal. Highlights transportation resources, and the responsibilities of providers under the Americans with Disabilities Act. <https://www.dol.gov/odep/topics/Transportation.htm>
 - US Department of Transportation, Federal Transit Administration. Some Federal agencies can support transportation service and costs. Learn about a Federal effort to coordinate these resources through the Coordinating Council on Access and Mobility (CCAM). <https://www.transit.dot.gov/ccam>

Travel Instruction

Travel instruction is comprehensive, intensive instruction designed to teach students with disabilities how to safely and independently use public transportation. Travel instruction is the process of learning how to use local public transportation in order to increase mobility, freedom and opportunities of students with disabilities. Students with disabilities must know what systems of transportation are available, how to access them, how to plan their travel and know what to do in unforeseen situations or emergencies. Travel instruction must be provided by trained instructors who can provide a continuum of instruction in the classroom (travel familiarity), and also in authentic community settings (travel training). Travel training results in increased independence, confidence, and ability to live, learn, work, and play within their communities. Transition professionals can work together with travel trainers to provide travel instruction that includes:

- Travel Orientation: Individual or group activity conducted for the purpose of explaining the transportation system.
- Travel Familiarization: Individual or group activity to facilitate use of transportation systems with a travel trainer accompanying student(s) on a new on a new mode of transportation or route to point out/explain features of access and usability.
- Travel Training: One-to-one comprehensive, specially designed instruction in the skills and behaviors necessary for independent travel on public transportation. Travel training takes place in community and authentic settings. <https://www.travelinstruction.org/>

Travel Instruction Resources

- Association of Travel Instruction (ATI). This national membership organization has the following mission: To advance the right of all persons with disabilities and older adults to equal access to public transportation and community participation by providing support, information, training and education to promote quality Travel Instruction. <https://www.travelinstruction.org/>
- National Aging and Disability Transportation Center (NADTC). National technical assistance center funded by the US Department of Transportation, Federal Transit Administration that promotes the availability and accessibility of transportation options for older adults, people with disabilities, caregivers, and communities. NADTC has various resources regarding travel instruction. www.nadtc.org



Resources to Identify Transportation and Mobility Services

- Center for Mobility Equity. MDTrip. This web portal and organization works closely with many service providers throughout Maryland in order to provide our users a variety of transportation options on one easy-to-use website. Its mission is to help people explore and use transportation alternatives to access destinations throughout Maryland. MDTrip also offers travel instruction. <https://www.mdtrip.org/>
- National Center for Mobility Management. National technical assistance center funded by the US Department of Transportation, Federal Transit Administration that promotes customer-centered mobility strategies that advance good health, economic vitality, self-sufficiency, and community. NCMM includes links to local transportation resources and networks of professionals, called mobility managers, who are knowledgeable about transportation resources. www.nc4mm.org

Healthcare Resources

Access to healthcare is an important consideration for students exiting the school system. As youth transition from high school to adult life it is important that they maintain a healthy lifestyle to achieve their postsecondary goals. This may include managing their healthcare and medications, communicating with healthcare professionals, and understanding healthcare insurance options. Individuals with disabilities may see pediatricians until they are 21 years of age, but at some point, it is crucial to transition from a pediatrician to a doctor who specializes in adults. The following links provide information about healthcare and the transition to adult healthcare for individuals with disabilities:

- Office of Genetics and People with Special Needs Resource Locator: <https://phpa.health.maryland.gov/genetics/Pages/home.aspx>
- National Center for Medical Home Implementation: <https://medicalhomeinfo.aap.org/Pages/default.aspx>
- Youth to Adult Health Care Transition: https://phpa.health.maryland.gov/genetics/Pages/Health_Care_Transition.aspx
- Got Transition: <http://www.gottransition.org/>

Community Access Resources

Recreation & Leisure

- **Maryland Learning Links** provides a comprehensive network of resources pertaining to recreation and leisure programs, as well as recreational activities throughout Maryland. <https://marylandlearninglinks.org>
- **Access for All: Maryland Department of Natural Resources (DNR)** is working to ensure that the state's magnificent natural resources are accessible to all citizens and visitors. From conception and design to construction and implementation, time and attention have been spent on camping areas, cabins, fishing and boating docks, visitor centers, trails, and other outdoor recreation amenities to make it possible for people with disabilities to enjoy Maryland's great outdoors. The DNR is constantly working to expand accessibility to include people with disabilities. <http://dnr.maryland.gov/Publiclands/Pages/accessforall.aspx>

Community Living Resources

- Centers for Independent Living provide services to help empower persons with disabilities to lead self-directed, independent and productive lives in the community. <http://www.msilc.org/map.html>
- Service Access & Information Link (SAIL): Web-based screening application tool that will allow Marylanders to apply, renew, or learn about other social services offered by the State of Maryland. <https://mydhrbenefits.dhr.state.md.us/dashboardClient/#/home>
- Social Security Administration Redbook: A quick reference source about employment-related provisions for Social Security Disability Insurance (SSDI) and Supplemental Security Income (SSI) benefit programs. <https://www.ssa.gov/redbook/eng/main.htm>
- First Call for Help: Get a free and confidential referral to health and human services in Maryland by contacting at 410-685-0525 in the greater Baltimore area or (800) 492-0618 outside Baltimore. <https://211md.org/>

In-Home Supports and Services

- **The Community First Choice (CFC) Program** provides community services and supports to enable older adults and individuals with disabilities to live in their own homes. Some supports include: personal assistance services, personal emergency response systems, assistive technology, accessibility adaptations, consumer training and home delivered meals. Individuals must meet an institutional level of care and be financially eligible for community Medicaid. For more information, contact Medicaid's Long-Term Care and Waiver Services at: 410-767-1739 or 1-877-463-3464 or for MD Relay Service 1-800- 735-2258. Visit the Maryland Department of Health for more information.
- **The Maryland Personal Care (MAPC) Program** provides in-home personal care, supports planning and nurse monitoring services to individuals with disabilities or chronic medical conditions who qualify for Medicaid. Services may be provided in the workplace. This program is administered through the local health departments. For more information, contact your local health department or the Maryland Department of Health at: 410-767-1739 or 1-877-463-3464 or for MD Relay Service 1-800- 735-2258.
- **The Community Pathways Waiver** is administered by the Developmental Disabilities Administration (DDA) under the Maryland Department of Health (DMH). The waiver offers a wide array of services to eligible individuals with an intellectual or developmental disability which is provided by licensed provider agencies or independent providers under self-directed services. There is a waiting list to receive services and funding availability is based on need. For more information or to apply for the waiting list, contact the [DDA headquarters](https://dda.health.maryland.gov/Pages/home.aspx) at <https://dda.health.maryland.gov/Pages/home.aspx> or by phone at 410-767-5600. To find contact information for DDA regional offices, visit <https://dda.health.maryland.gov/Pages/Regional%20Offices.aspx>.
- The Low Intensity Support Services (LISS) program is administered by the Developmental Disabilities Administration (DDA) under the Maryland Department of Health and grants eligible applicants up to \$2,000 for services supports by the person with a disability and their family. The DDA distributes LISS funding twice during the fiscal year in two rounds (July 1-31 and January 1-31). LISS funding is distributed based on random selection and eligibility requirements. LISS provides funding for various individual support services and family support services to include: personal and attendant care, respite care, and other services to maximize independence, productivity, and integration within the community. There are currently four LISS agencies throughout the state responsible for processing applications. For more information, visit <https://dda.health.maryland.gov/Pages/liss.aspx>.



Housing Resources

- **Maryland** Housing Search Database: Maryland Department of Housing and Community Development's searchable database for affordable housing. <http://www.mdhousingsearch.org/>
- Maryland Affordable Apartment Search: Database maintained by the US Department of Housing and Urban Development of apartments that receive funding from HUD to offer subsidies to low-income tenants. <http://www.hud.gov/apps/section8/step2.cfm?state=MD>
- GoSection8.com: Database of housing available to people receiving Section 8 vouchers. <http://www.gosection8.com/>

Rent Subsidy Programs

- Maryland has programs to help people who have a low-income pay for rental housing in their community. However, the waiting lists are long, so it is best to apply as soon as possible.
- Maryland Department of Disabilities (MDOD) helps administer two programs for people with disabilities who have low incomes:
 - [Harry & Jeanette Weinberg Affordable Rental Housing Opportunities for Persons with Disabilities Initiative](#)
 - [Section 811 Project Rental Assistance for People with Disabilities](#)

People with and without disabilities can also apply for public housing or rental assistance through the Housing Choice Voucher (Section 8) program. Contact your county's [Public Housing Agency](#) to find out what assistance is available in your area. Note: For residents of the Eastern Shore, Garrett, Allegany, and Frederick Counties, contact the <https://www.hud.gov/states/maryland/renting/hawebsites>, which serves as your area's Public Housing Agency.

Guardianship and Alternatives

Every individual who is 18 years of age and older has the right to make decisions concerning their lives. However, some individuals may require assistance in making those critical decisions. Guardianship and durable power of attorney provide two possible alternatives to ensure that the affairs of an individual with a disability are handled appropriately. There are significant differences between the two options. For more information please refer to the handbook, Guardianship and its Alternatives.

<http://www.disabilityrightsmd.org/wp-content/uploads/2011/12/Guardianship-Handbook-2011.pdf>

Financial Planning/Special Needs Trusts/Estate Planning

Financial planning is the ability to understand how money works in the world: how someone manages to earn or make it, how that person manages it, how they can turn it into more and how that person donates it to help others. More specifically, it refers to the set of skills and knowledge that allows an individual to make informed and effective decisions about their finances. It is advisable to consult a financial planner familiar with the unique requirements for individuals with disabilities. Financial planning for loved ones can be a daunting task for any family, especially those who have relatives with disabilities. Persons with disabilities are living longer and more fulfilling lives than ever before. For this reason, it is important for parents and/or guardians to prepare a financial plan for them once they are no longer able to handle their care. One financial tool used by many to arrange for such future care is a trust. A trust is a legal arrangement where one party holds property for the financial benefit of another party. In other words, it can be thought of as a type of holding area, where a grantor, the party who creates the trust, will hold their

assets before they distribute them to designated beneficiaries. Grantors of a trust can be a parent, grandparent, legal guardian or the court. Furthermore, there are many different types of trusts that can be used for varying family circumstances.

Special Needs Trusts (SNTs) are a complex type of trust, used by many families to provide financial stability for relatives with disabilities and special needs. These trusts are primarily aimed to preserve a relative's eligibility for government aid while allowing them to maintain a higher standard of living than might be possible with government aid alone.

As part of Futures Planning, which refers to envisioning a desired future for yourself, a family member, or a friend, and then identifying the types of services and supports that are needed, estate planning is one such aspect that refers to the process of planning how you want to transfer money or assets to other people during your lifetime or at your death. This process requires thoughtful preparation and supportive and knowledgeable people to assist in your plan and executing the right documents. There are guides that serve as valuable resources as family members consider options and begin the planning process.

Visit the websites below to view examples of futures and estate planning guides and handbooks:

- [A Futures and Estate Planning Guide for Families of Children and Adults with Developmental Disabilities](#)
- [Future Planning](#)
- [When Your Child Turns 18: A Guide To Special Needs Guardianship](#)
- [Able Accounts](#)
- [Maryland ABLE Program](#)
- [ABLE National Resource Center](#)
- [Financial Planning for Special Needs Care: Special Needs Trusts \(SNTs\)](#)

Conclusion

Planning for transition is an integral part of a student's journey from school to adulthood. Leaving a school environment that has been constant for more than 12 years and entering the unknown world of adulthood can be unsettling for students and their families. Carefully planning the transition to the adult world helps lessen these fears through teamwork with the student, school staff, family, and community.

It is never too early to begin planning what life will look like for students when they enter the adult world. This guide is meant to serve as a resource for families and professionals who are assisting students as they transition from high school to a career, postsecondary education, and community life. It is meant to be a starting point and planning tool to be used in conjunction with an IEP team to plan for and secure the necessary supports and services that will enable a smooth and seamless transition.



Appendix A

Transition Timeline - For Students Exiting the School System at Age 21 and Who are Eligible for DDA Services

Age/Timeline	Transition Timeline Activities for Students Exiting the School System at Age 21 and Who are Eligible for DDA Services
Age 14/15 (or younger if appropriate)	<ul style="list-style-type: none"> ● Begin identifying abilities, strengths, and challenges. ● Learn about disability and how it affects learning and other life activities. https://www.youthhood.org/hangout/km_disability.asp ● Begin to self-advocate. Attend and participate in IEP meetings. https://marylandlearninglinks.org/ ● Begin participating in annual transition assessments (i.e. career interest inventories, student interview). http://nsttac.org/content/age-appropriate-transition-assessment-toolkit-3rd-edition ● Begin identifying career interests and post-secondary goals. ● Learn how transition support is provided within the school district. Identify transition personnel. ● Develop the initial transition plan at the annual IEP meeting. The transition plan is developed the IEP year the student turns 14 years of age and is updated annually. http://www.mdtransitions.org/ ● Apply to Developmental Disabilities Administration (DDA). https://dda.health.maryland.gov/pages/Home.aspx ● If enrolled in high school, investigate Pre-Employment Transition Services (Pre-ETS) through the Division of Rehabilitation Services (DORS). ● Give written consent for school to share educational information with DDA or DORS if the student and family are interested in applying for services. ● Begin attending community transition fairs and workshops. ● Create a transition planning home file. ● Explore and participate in community-based instruction opportunities offered through your school.
Age 16/17	<ul style="list-style-type: none"> ● Explore and participate in employment training opportunities offered through your school district. ● Acquire the Maryland State Identification card from the Motor Vehicle Administration. http://www.mva.maryland.gov/Driver-Services/apply/id-card.htm ● Consider travel training. Utilize public transportation to travel in your community. https://www.mobilityequity.org/travel-training ● Submit a Mobility Application Form for mobility/paratransit services. http://mta.maryland.gov/mobility ● Consider obtaining a driver's license. http://www.mva.maryland.gov/drivers/apply/apply.htm http://dors.maryland.gov/consumers/WTC/Documents/Driving.pdf ● Create social networks. Make connections with friends for recreation and social events that can continue after exiting high school.
Age 17/18	<ul style="list-style-type: none"> ● Create a support network. Develop a list of people to go to for help.



Age/Timeline	Transition Timeline Activities for Students Exiting the School System at Age 21 and Who are Eligible for DDA Services
	<ul style="list-style-type: none"> ● Create healthcare connections. Develop a plan to change from pediatric to an adult health care system. ● Consider consulting an attorney about future needs planning. ● Investigate the need for power of attorney or guardianship. Suggested handbook: Guardianship and Its Alternatives. https://aging.maryland.gov/Pages/default.aspx ● Contact DDA Regional Office to verify eligibility status and priority category. ● The contact information for DDA Regional Offices can be found at: https://dda.health.maryland.gov/Pages/coordination%20of%20community%20services.aspx ● Explore and choose a Coordination of Community Services Provider. To find current Coordination of Community Services Providers in your region visit: https://dda.health.maryland.gov/Pages/coordination%20of%20community%20services.aspx ● Explore assistive technology (if appropriate) options upon exiting the school system
Age 18	<ul style="list-style-type: none"> ● Explore supported employment and work-based learning opportunities offered through your school district. ● Attend community transition fairs and workshops. Apply for Supplemental Security Income (SSI). http://ssa.gov ● Apply for Medical Assistance. https://mmcp.health.maryland.gov/Pages/Am%20I%20Eligible.aspx ● Consider benefits counseling and planning. mdtransitions.org/benefits-counselors/, mdbenefitscounseling.org/ ● Begin financial and future planning. ● If not yet completed, choose a Coordination of Community Service (CCS) Provider. ● Meet with your Coordinator of Community Service (CCS) to develop a plan for the future. ● Register for Selective Service (if male). http://www.sss.gov ● Register to vote. ● Explore living arrangement options. (Independent, roommate, group living etc.) ● Explore subsidized housing in your community. https://www.hud.gov/states/maryland/renting/hawebsites
Age 19-20 (year prior to exit)	<ul style="list-style-type: none"> ● Contact Developmental Disabilities Administration (DDA) for eligibility status if not yet determined. ● Apply to the Division of Rehabilitation Services (DORS) the fall prior to exit year. https://dors.maryland.gov/Pages/default.aspx ● Consider a Career Assessment through the Division of Rehabilitation Services (DORS). ● Begin visiting community adult service providers. https://dda.health.maryland.gov/Pages/Self-Determination.aspx ● Visit Self-Directed Services if interested in learning about self-directing services. https://dda.health.maryland.gov/Pages/sdforms.aspx ● If choosing Self-Directed Services, choose a support broker and fiscal management service. ● Explore post-secondary education and training options. ● Explore adult mental health care if needed.



Age/Timeline	Transition Timeline Activities for Students Exiting the School System at Age 21 and Who are Eligible for DDA Services
Age 20-21 (October/ November of final year)	<ul style="list-style-type: none"> ● Apply to several providers that best meet your needs. ● Finalize the selection of an adult provider. ● Invite adult provider to exit IEP meeting. ● Work with your coordinator of resource services and adult provider to develop a service funding plan to be submitted to Developmental Disabilities Administration (DDA). ● If selecting Self-Directed Services, begin to write a self-directed plan with your support broker. ● Develop a contingency plan in the event that funding from the Developmental Disabilities Administration (DDA) is not immediately available. ● Explore transportation options (i.e., how to get to work and around community, etc.)
Age 20/21 (spring of final year)	<ul style="list-style-type: none"> ● Work with school transition personnel, adult provider and Coordinator of Community Resources to create a seamless transition from the school system into the adult service delivery system.

Transition Timeline - For Students Graduating at Age 18

Age/Timeline	Transition Timeline Activities for Students Graduating at Age 18
Age 13/14 (last year of middle school)	<ul style="list-style-type: none"> ● Begin identifying abilities, strengths, and challenges. ● Learn about disability and how it affects learning and other life activities. https://www.youthhood.org/hangout/km_disability.asp ● Practice self-advocacy skills. Attend and participate in IEP meetings. www.marylandlearninglinks.org ● Begin participating in annual transition assessments (i.e. career interest inventories, student interview). https://transitionta.org/toolkitassessment ● Begin identifying career interests and post-secondary goals. ● Learn how transition support is provided within school district. Identify transition personnel. ● Develop the initial transition plan at the annual IEP meeting. The transition plan is developed the IEP year the student turns 14 years of age and is updated annually. http://www.mdtransitions.org/ ● Consider a 5-year plan to earn a diploma. ● Apply to Developmental Disabilities Administration (DDA) if appropriate. https://dda.health.maryland.gov/pages/Home.aspx ● If enrolled in high school, investigate Pre-Employment Transition Services (Pre-ETS) through the Division of Rehabilitation Services (DORS). ● Give permission for school to share educational information with DDA and DORS. ● Create a transition planning home file.
Freshman Year (Grade 9)	<ul style="list-style-type: none"> ● Meet with guidance counselor to select a high school course of study (completer program). http://marylandpublicschools.org/programs/Documents/CTE/CTE%20Programs%20of%20Study/CTEBlueBook2017.pdf



Age/Timeline	Transition Timeline Activities for Students Graduating at Age 18
	<ul style="list-style-type: none"> ● Become familiar with needed classroom accommodations. ● Create social and support networks. ● Review graduation requirements with guidance counselor.
<p>Sophomore Year (Grade 10)</p>	<ul style="list-style-type: none"> ● Research career interests. Visit businesses. Arrange job shadowing. ● Acquire the Maryland State Identification card from the Motor Vehicle Administration. http://www.mva.maryland.gov/drivers/apply/id-card.htm ● Meet with the school team to apply for College Board Accommodations. https://www.collegeboard.org/students-with-disabilities/request-accommodations ● Take the PSAT. ● Review graduation requirements with guidance counselor. ● Explore transportation options. Consider travel training. Utilize public transportation to travel in your community. ● Submit a Mobility Application Form for mobility/paratransit services. http://mta.maryland.gov/mobility ● Consider obtaining a driver’s license. http://www.mva.maryland.gov/drivers/apply/apply.htm http://dors.maryland.gov/consumers/WTC/Documents/Driving.pdf
<p>Junior Year (Grade 11)</p>	<ul style="list-style-type: none"> ● Apply to the Division of Rehabilitation Services (DORS) the fall prior to exit year for vocational rehabilitation services. http://dors.maryland.gov/Pages/default.aspx ● Consider a Career Assessment through the Division of Rehabilitation Services. ● Meet with the school team to apply for College Board Accommodations. https://www.collegeboard.org/students-with-disabilities/request-accommodations ● Take the PSAT. ● Consider obtaining a driver’s license. http://www.mva.maryland.gov/drivers/apply/apply.htm http://dors.maryland.gov/consumers/WTC/Documents/Driving.pdf ● Consider part-time/summer employment. ● Research colleges, trade schools, training programs, military and employment opportunities. Discuss with guidance counselor and/or transition personnel. ● Refine post-secondary goals. ● Visit colleges, trade schools and/or post-secondary training programs. ● If exploring military options, meet with military recruiter and take the ASVAB. military.com/join-armed-forces/asvab ● If entering employment upon graduation, research job opportunities. Network with family and friends about job openings in their companies. ● Explore the differences between community college and 4-year university programs. ● Consider part-time vs full-time enrollment options for post-secondary programs. ● Begin to research federal and state financial aid and scholarships for post-secondary programs. ● Explore/participate in high school to college transition programs. ● Review graduation requirements with guidance counselor.
<p>Senior Year (Grade 12)</p>	<ul style="list-style-type: none"> ● Prepare to take the SAT and/or the ACT http://sat.collegeboard.org/home?affiliateId=nav&bannerId=g-cbh-sat http://www.actstudent.org/ https://www.collegeboard.org/students-with-disabilities/request-accommodations



Age/Timeline	Transition Timeline Activities for Students Graduating at Age 18
	<ul style="list-style-type: none"> ● If enrolling in community college, prepare to take the Accuplacer. If categorized as a remedial (not “college-ready”) student, access academic services for pre-college instruction. http://accuplacer.collegeboard.org/students ● Apply to colleges or post-secondary programs or enlist in the military. ● If applying to postsecondary schools, contact the Disability Support Center. ● If entering employment, begin submitting applications. ● Apply for scholarships and grants. ● Meet with DORS counselor to discuss funding for post-secondary programs or employment opportunities. ● Apply for Supplemental Security Income (SSI) at age 18 if eligible. http://ssa.gov ● Individuals receiving SSI and SSDI are eligible to apply for the community college tuition waiver. https://mhec.maryland.gov/preparing/Pages/FinancialAid/ProgramDescriptions/prog_disabilities.aspx ● Apply for federal and state financial aid between January 1st and March 1st. https://fafsa.ed.gov/ ● Explore adult mental health care if needed. ● Explore assistive technology options (if appropriate) upon exiting school system. ● Apply for Medical Assistance if eligible. https://mmcp.health.maryland.gov/Pages/Am%20I%20Eligible.aspx ● Register for Selective Service (if male) at age 18. http://www.sss.gov ● Register to vote at age 18. ● Change pediatric healthcare to an adult health care system. ● Upon acceptance into college, access Disability Support Services.



Appendix B

Postsecondary Education Accommodations Frequently Asked Questions (FAQ)

The Individuals with Disabilities Act of 2004 (IDEA) requires that a student with disabilities have an IEP. However, IDEA does not apply to colleges, trade schools, or universities. These schools are governed by a set of other federal laws including the Americans with disabilities Act (ADA) and Section 504 of the Vocational Rehabilitation Act.

❖ ACCESSING ACCOMMODATIONS AT POSTSECONDARY SCHOOLS

Will I continue to have an Individualized Education Program (IEP)?

No. There are no IEP's in a college setting. The responsibilities of colleges, trade schools, and universities are significantly different from those of the high schools. Another significant difference is that postsecondary schools will only work with the young adult and not with the parent. The young adult will have much greater responsibilities as a college student. These laws make it the young adult's responsibility to request services and to provide appropriate documentation of the disability. The young adult must initiate the process and be actively involved in requesting appropriate accommodations.

Will I get the same accommodations as I received in high school?

Not necessarily. The IEP does not carry over to the postsecondary school. The postsecondary school will determine what accommodations the student will receive after the information has been gathered and the documentation has been reviewed.

❖ ACCESSING DISABILITY SERVICES AT POSTSECONDARY SCHOOLS

Where do I go for services?

Every postsecondary school has individuals who assist students with disabilities. These individuals are in the Disability Support Services Office (DSS). To receive academic accommodations and/or other services, the young adult must first self-identify to the DSS office. It is the young adult's responsibility to talk to the postsecondary school about the needed supports.

When should I request services?

Although the young adult may request accommodations from postsecondary schools at any time, it is recommended that he/she make an appointment with the DSS office as soon as possible and no later than one month before the start of the semester. Arranging services and accommodations takes time. Some academic adjustments may take more time to provide than others. Accommodations are never made retroactively. Never wait until academic difficulties arise.

What documentation do I need to provide?

Schools set reasonable standards for documentation. Some schools may require more documentation than others, but all schools will require the young adult to provide documentation prepared by an appropriate qualified professional. The young adult will be **responsible for any fees** associated with obtaining required documentation. Essential elements of the documentation include:

- A diagnostic statement identifying the disability.

- A description of the diagnostic methodology used, the current functional limitations as they relate to both academic and residential settings, the expected progression or stability of the disability, and current and past accommodations, services and/or medications.
- Recommendations for accommodations, adaptive devices, assistive services, compensatory strategies, and/or collateral support services.

❖ RECEIVING ACCOMMODATIONS AT POSTSECONDARY SCHOOLS

What accommodations are provided?

Accommodations are modifications to the academic requirements that are necessary to ensure equal access to qualified young adults with disabilities. Reasonable accommodations may include:

- Extended time on tests
- Books in alternate format
- Sign language interpreters
- Screen readers
- Voice recognition
- Other assistive technology

The DSS office will work with the young adult to set up the reasonable accommodations. An accommodation cannot be provided if it creates a fundamental alteration of the coursework. Waiving of required coursework is not permitted. Students with disabilities are required to meet the requirements of the program of study in order to graduate.

Appendix C

Specific Populations

There are other transition-related supports and services that specific populations of persons with disabilities may need as they access employment, postsecondary education, and community activities. A few of them are discussed below. For information about specific populations (e.g. Autism, Deaf/Hard of Hearing, Blind/Low Vision) visit the Maryland Transition Website: <https://mdtransitions.org/> For information about family specific supports, visit The Parents' Place of Maryland website at <https://www.ppmmd.org/> or the Parent Resource Center in your local school system.

Autism

Autism Spectrum Disorder (ASD) is defined by a certain set of behaviors and is a "spectrum condition" that affects individuals differently and to varying degrees. These characteristics are generally evident before age three and adversely affect educational performance. Children with the disorder range from very high-functioning (nearly indistinguishable from children who do not have autism) to profoundly impaired. Some of the behaviors associated with autism include delayed learning of language; difficulty making eye contact or holding a conversation; difficulty with executive functioning, which relates to reasoning and planning; narrow, intense interests; poor motor skills' and sensory sensitivities. Again, a person on the spectrum might follow many of these behaviors or just a few, or many others besides. The diagnosis of autism spectrum disorder is applied based on analysis of all behaviors and their severity.

For more information and to learn about available resources visit: <http://www.pathfindersforautism.org/> or <https://www.autismspeaks.org/>.

Deaf/Hard of Hearing

- Deaf: The official definition of deafness from the Individuals with Disabilities Education Act (IDEA) is "a hearing impairment that is so severe that the child is impaired in processing linguistic information through hearing, with or without amplification." The phrase "with or without amplification" is significant as it indicates that a hearing aid will not provide sufficient accommodation so that the student can succeed in the classroom.
- Hard of Hearing: Students identified as hard of hearing have some degree of hearing loss ranging from mild to profound. Those who are hard of hearing may benefit from the use of hearing aids or other assistive listening devices. They depend primarily upon spoken English in communicating with others.

For more information and to learn about available resources visit www.nationaldeafcenter.org.

Blind/Low Vision

- According to IDEA, a visual impairment is vision that even with correction adversely affects a child's educational performance. The term includes both partial sight and blindness. Partial sight can refer to low vision (cannot read at a normal reading distance even with corrective lenses). Blindness can refer to either being legally blind (less than 20/200 vision in the better eye), a limited field of vision, or total blindness (no sight).

- Students with visual impairments need to learn the same subjects and academic skills as their sighted peers, although they will probably do so in adapted ways. They must also learn an expanded set of skills that are distinctly vision-related.

For more information and to learn about available resources visit:

Division of Rehabilitation Services
Guide to Rehabilitation Services and Resources for Individuals who are Blind or Severely Visually Impaired
http://dors.maryland.gov/Brochures/blind_guide.pdf

The Maryland School for the Blind
3501 Taylor Avenue
Baltimore, MD 21236
(401) 444-5000
<https://www.marylandschoolfortheblind.org/>

American Association of the Deaf-Blind
8630 Fenton Street, Suite 121
Silver Spring, MD 20910-3803
(301) 495-4403
TDD/TTY Telephone: (304) 495-4402
Email: AADB-Info@aadb.org
<http://www.aadb.org/>

Columbia Lighthouse for the Blind
8720 Georgia Avenue Suite 210
Silver Spring, MD 20910
301-589-0894
<http://www.clb.org/>

National Federation of the Blind
200 East Wells Street
at Jernigan Place
Baltimore, MD 21230
(410)-659-9314
Fax: (410)-685-5653
<https://nfb.org/>



Appendix D

Glossary of Term and Acronyms

ADA - Americans with Disabilities Act- The civil rights act for persons with disabilities

ASD - Autism Spectrum Disorders

ASVAB - Armed Services Vocational Aptitude Battery

AT - Assistive Technology--Low- or high-tech devices (like switches or computer software) to help people communicate or complete work tasks

BHA - Behavioral Health Administration

CCS - Coordinator of Community Services

CIL - Centers for Independent Living

Community-based - Services provided in the community where people with and without disabilities work, live, and spend their free time, versus a segregated setting where all of the individuals in a particular setting have a disability

Competitive Employment - Employment found in vocational settings within the community that require no additional support

CRP - Community Rehabilitation Partner (Vendors from the adult systems that may provide services and supports to individuals with disabilities after they exit school, if determined eligible.)

DDA - Developmental Disabilities Administration

DORS - Division of Rehabilitation Services

DLLR - Department of Labor, License, and Regulation

DSS - Department of Social Services

Eligible - Must qualify for services by meeting specific requirements

Entitlement - Services are guaranteed

Guardianship - A court proceeding that grants decision-making authority for an adult with a significant cognitive disability to a third party (e.g., parent is granted decision-making power over their child's finances.)

IDEA - Individuals with Disabilities Education Act - Federal regulations that govern special education

IEP - Individual Education Program

Maryland's Secondary Transition Planning Guide for Individuals with Disabilities

Interest Inventories - Verbal, written or computer exercises that help a person identify what jobs might be a good fit for them based on things they like to do and activities they like to participate in

IPE - Individualized Plan for Employment

MA - Medical Assistance

MTA - Maryland Transit Administration

Pre-ETS - Pre- Employment Transition Services under Workforce Innovation and Opportunity Act (WIOA)

Self-Advocacy - The process of obtaining needed services for oneself

Self-Determination - A process in which the individual's preferences, interest, abilities, and wishes are the focus of planning and implementing activities

SGA - Substantial Gainful Activity

SSA - Social Security Administration

SSDI - Social Security Disability Insurance

SSI - Supplemental Security Income

VR - Vocational Rehabilitation

WIOA - Workforce Innovation and Opportunity Act



Appendix E

Transition Process: Agency Linkage

Students with disabilities may require adult services to attain their postsecondary goals in employment, postsecondary education, training, and independent living (when appropriate). As a result, students and families need to make the right connections before leaving school so there are no gaps in service. With your permission, a school representative will assist with linking the student to the appropriate agencies. It is the responsibility of the student and family to complete the application process to ensure needed services are received if the student is determined eligible.

The Secondary Transition Planning Guide for Individuals with Disabilities provides information on potential adult services. The guide contains information on agency eligibility criteria and specific linkage process. This information will assist you and your child as you begin the transition process and linkage to adult services.

The review of the Secondary Transition Planning Guide for Individuals with Disabilities is the first step in the appropriate agency linkage process. The Guide provides information needed to select the correct agency for assistance. Your student's school staff can provide local contact information regarding the application process.

The receipt of the Secondary Transition Planning Guide for Individuals with Disabilities serves as the initial linkage with adult services agencies. The distribution of this Guide is part of the transition planning process and your signature on this form will verify your receipt of the Guide.

Student Name:

Date:

Local School System:

Student Signature:

Parent Signature:

For more information about secondary transition planning in Maryland:

Contact the Maryland State Secondary Transition team—

Maryland State Department of Education
Division of Early Intervention and Special Education Services
200 West Baltimore Street
Baltimore, Maryland 21201
410-767-0244 phone
410333-8165 fax





Maryland State Department of Education

Revised April 2020